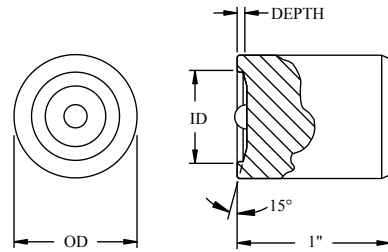


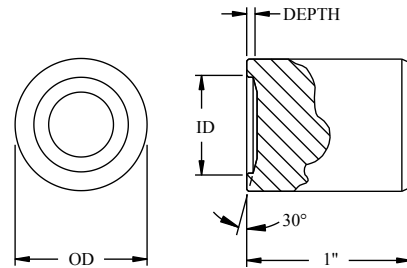
**NAS Style**

Screw Size	Part Number	OD inch/mm	ID inch/mm	Depth inch/mm
10	NAS1103	.625/15.88	.455/11.56	.025/.64
1/4"	NAS1104	.875/22.22	.530/13.46	.025/.64
5/16"	NAS1105	1.000/25.40	.600/15.24	.030/.76
3/8"	NAS1106	1.000/25.40	.680/17.27	.030/.76
7/16"	NAS1107	1.000/25.40	.815/20.70	.035/.89
1/2"	NAS1108	1.25/31.75	.895/22.73	.040/1.02
5/8"	NAS1110	1.50/38.10	1.110/28.19	.040/1.02



**AN Style**

Screw Size	Part Number	OD inch/mm	ID inch/mm	Depth inch/mm
10	AN-3	.625/15.88	.455/11.56	.030/.76
1/4"	AN-4	.875/22.22	.530/13.46	.030/.76
5/16"	AN-5	1.000/25.40	.605/15.37	.030/.76
3/8"	AN-6	1.000/25.40	.675/17.15	.030/.76
7/16"	AN-7	1.250/31.75	.745/18.92	.035/.89
1/2"	AN-8	1.250/31.75	.895/22.73	.035/.89



1. M2 Material at RC 59 - 61
2. Special materials available upon quote.
3. Hammers available with raised or depressed headmarking. Specify when ordering.